

muscle

sat

fat

total

Density (HU)

35

-115

-87

-48

Area (CM²)

93

272

82

1

L5

Density (HU)

33

-115

-87

-48

Area (CM²)

91

272

82

1

Aiken

Adipo

Precision Fat Analysis For Smarter Healthcare

Certificates

FDA

MD5

Manufacturing License of Medical Devices

VAPT

CRITICAL PART OF YOUR CYBERSECURITY

ISO

13485

Quality Management System

ANVISA

Agência Nacional de Vigilância Sanitária

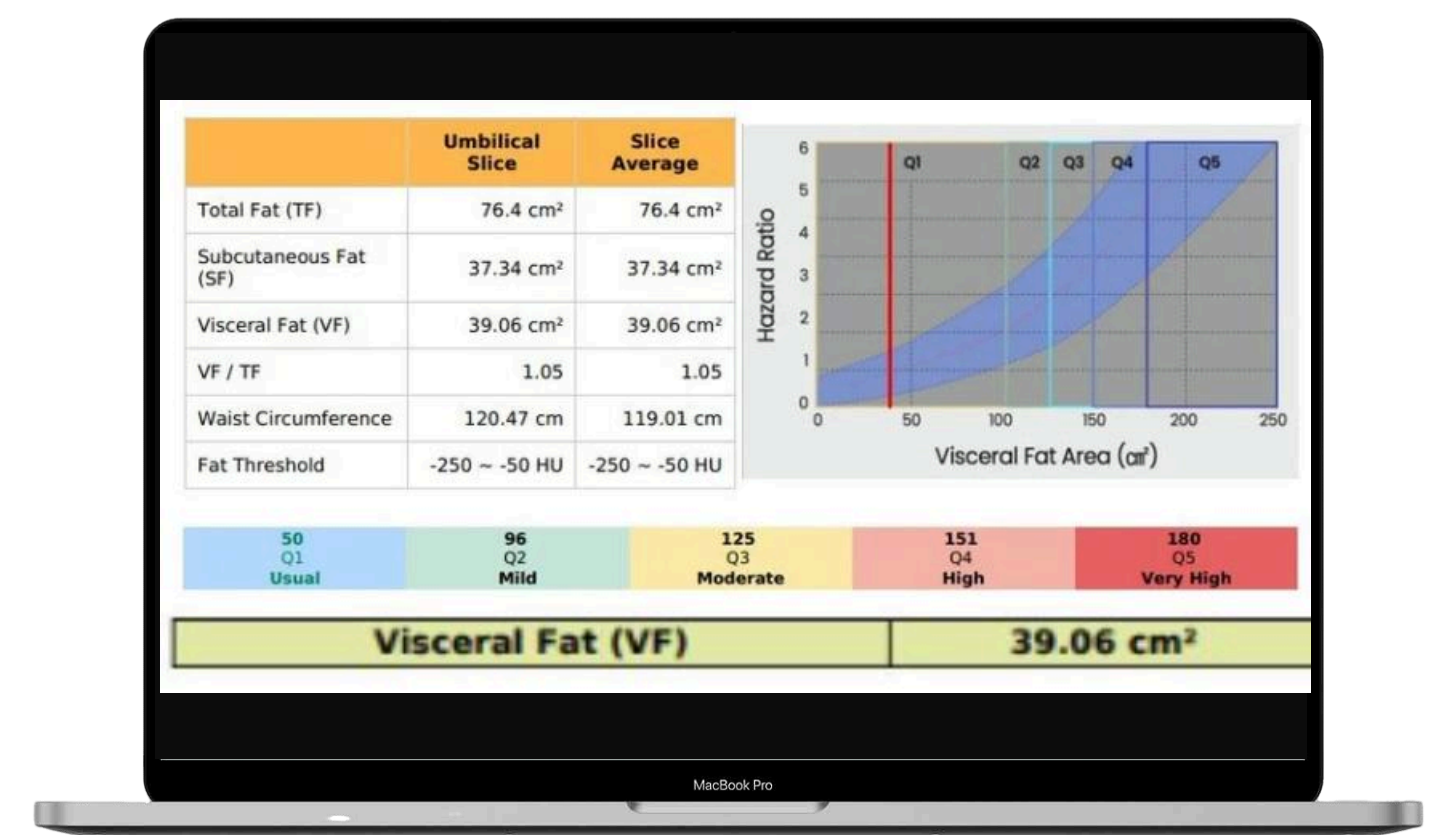
# Aiken Adipo



Instantly identifies visceral fat in the T12-L5 region



Accurate Fat Distribution Analysis



Designed for post-processing CT scans.

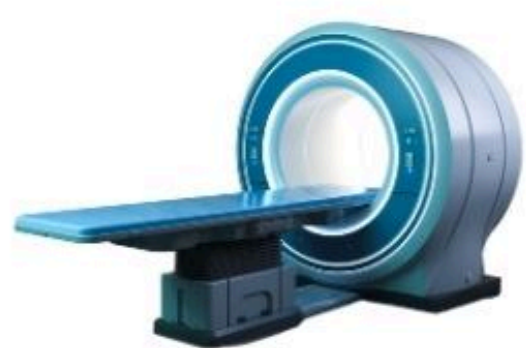


Health Metrics



Seamless Integration with CT Scan

## How it works



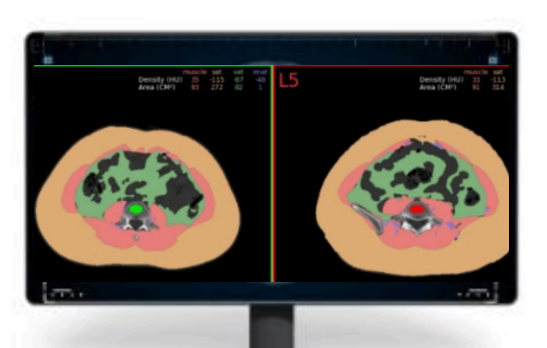
Modality console



Aiken Pusher



QuickRad PACS Server



QuickRad Viewer